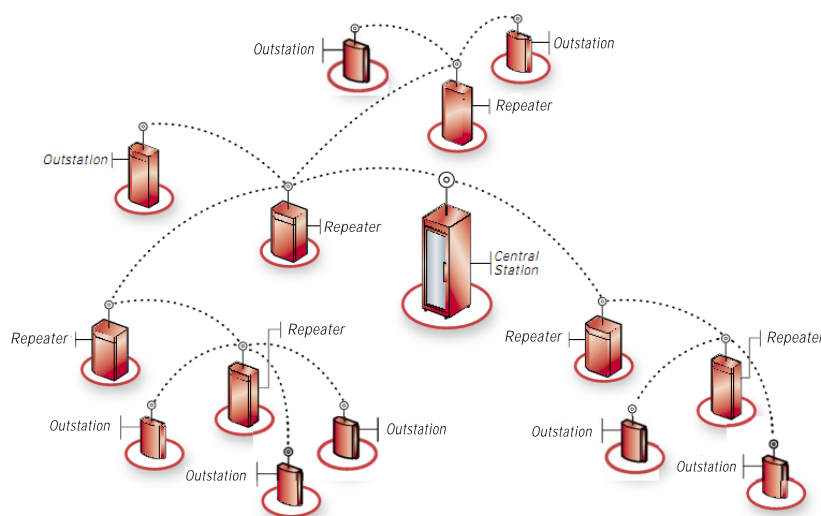


SR500

Long Range Voice + Data Access

Point-to-Multipoint Fixed Wireless Access

The SR500 is a point-to-multipoint fixed wireless access system that enables operators to extend their reach and deliver a full range of voice and data applications to end-users in remote locations. Designed for the harshest environments, this robust system is built on field-proven technology and designed to last. It supports a variety of network and end-user interfaces. With a reach of up to 720 kilometres from the central station, the **SR500** boasts the longest reach in the industry and has the largest installed base in the world.



Markets

Typical Industrial and SCADA Applications

Oil and natural gas industries : Communications services for on-shore, off-shore and distribution operations.

Electric utilities : Remote control of generation, line protection and substation operation and distribution.

Water management : Remote monitoring of reservoir levels, rainfall rates and flood alarms.

Resource industries : Communications services for mining, forestry, agriculture and manufacturing.

Enterprise Communications : As it is completely transparent to protocols, it fully supports the transport of PPP, TCP/IP, Frame Relay, X.25 and other protocols. The **SR500** supports a wide range of data interfaces, including V.35, X.21, G.703 and Ethernet 10 Base T.

Main application: Multimedia, Reliable Internet Access, Wide Area Network.

Rural Telephony : Thanks to the **SR500's** modular and flexible platform, end-users in remote regions can enjoy the same reliable telecommunication services and applications as their suburban and urban counterparts.

Carrier-class telephone (voice, fax and dialup Internet)

- Internet access
- Telecommuting
- Payphone service
- Inter PBX trunking
- Replace multiparty lines, aging outside plant equipment and small local rural exchange

Essential in: Community and Small Business Development, Telemedicine, Regional Development, Tele-education, Emergency Support and Disaster Relief.

Features

Frequency bands : 1.3 to 2.7 GHz, 3.5 GHz and 10.5 GHz.

Integrated backhaul : Repeaters efficiently extend the wireless network and provide a built-in backhaul capability to the central office using the same frequency radio spectrum.

Easy network scaling : The combination of central stations and remote stations enables operators to deploy their networks according to end-users' specific needs.

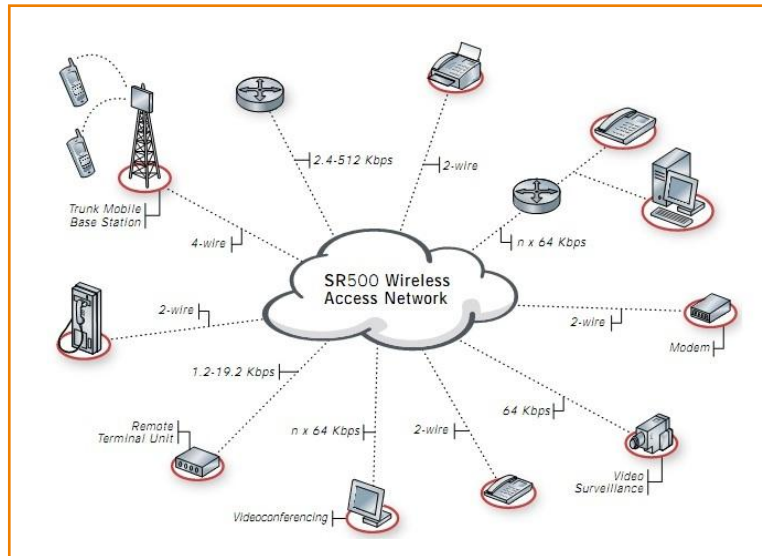
Farthest reach : The SR500 uses repeaters to expand the area of service. This enables the SR500 system to have a reach of up to 720 kilometers from the central station.

Network capacity : The SR500 supports up to 511 out stations on a single Central Station. The 4Mbps of the radio frame are shared between all the remotes stations by selectable methods (i.e. on-demand or dedicated circuits).

High transmit power : The SR500 offers variety of selectable transmits power such as: +20dBm, +30dBm and +35dBm, to optimize the radio link availability.

Variety of interfaces : The SR500 offers a large scale of selectable interfaces such as: Ethernet 10 Base T, X21, V35, RS232, 2W, 4W E&M at the remote stations and G703, G704, G706, G732, G821 G823 on E1 - V5.2 protocol, G703 on E1- CAS protocol, G703 on channelized E1, RS232, 2W, 4W E&M.

Other features : Redundancy with Hot Stand By functions on the core modules at the Central station, repeater stations and out stations. Network Management System on windows based environment.



Central stations



Compact



Standard

Remote stations



Slim10



Slim34



TS4



HCO